

RAINER ABICHT Elbrederei GmbH & Co. KG.
 Bei den St. Pauli Landungsbrücken, Brücke 1
 20359 Hamburg
 Tel.: +49 (0)40 31 78 22-0
 Fax: +49 (0)40 31 78 22-22
 E-Mail: kontakt@abicht.de



Share your favourite moments with us:
[f](#) [i](#) [t](#) [d](#) www.abicht.cruises

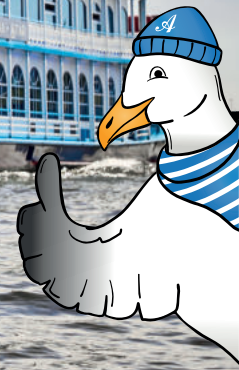
Many of our passenger ships are barrier-free. Please contact us in advance on: +49 40 31 78 22 0. Our luxury barges and our traditional barges are not barrier-free.

For commentary in English or other languages we offer our „RainerAbicht“ Audio App.

- 1-hour harbour tour**
On the passenger ship through the container port
- 1-hour harbour tour**
On the launch through the warehouse district Speicherstadt
- 2-hour XXL harbour tour**
Harbour tour also through the warehouse district Speicherstadt
- 2-hour round trip to Blankenese**
Round trip to Blankenese

Our classics at the harbour edge

ORIGINAL HAMBURG HARBOUR TOURS



Moin and welcome
**ABOARD
OUR SHIP**



**Evening
LIGHT
CRUISE**



**XXL ROUND TRIP
TOWARDS BLANKENESE**



Experience the port of Hamburg at close quarters with 1- or 2-hour harbour tours.*

Harbour tour of Hamburg - all kinds of sailor's tales: there's plenty to experience on the tours to the world's most modern terminal in Altenwerder, past ocean liners and through the locks and canals of the historic Speicherstadt.

Experience informative and interesting sights with first-hand explanations – comfortably through our app.

On traditional or modern launches and elegant saloon ships you will experience the Speicherstadt flair and the giants of the seas. After these cruises you will be familiar with the well-known container terminals and understand why we cannot navigate into the historic Speicherstadt at all times of the day.

Info & departure 1-hour harbour tour

365 Days | Duration: ca. 1 hour | **Departure 01.03.–31.10.** | ca. every 20 min.
Departure 01.11.–end of february | ca. every 30 minutes
St. Pauli Landungsbrücken, Brücke 1+4

Info & departure 2-hour harbour tour

365 Days | Duration: ca. 2 hours
Departure 01.03.–31.10. | 10.30 a.m.–15.30 p.m. ca. every 30 min.
Departure 01.11.–end of february | 10.30 a.m.–14.30 p.m. hourly
Additional departures on weekends and public holidays.



Light tour through the illuminated warehouse district and the sea of lights in the evening port of Hamburg.*

Hamburg by night - cruise on our maritime launches or comfortable saloon ships through the special evening atmosphere of the harbour basins. When the tide allows, the tour takes you through the canals of the historic warehouse district, with its magically illuminated bridges and office buildings.

The Port of Hamburg is an open seaport and therefore dependent on the tide. For this reason, it is not possible to sail through the canals of the historic Speicherstadt at all times.

Info & departure light tour

365 Days | Duration: ca. 1 hour
Departure times at www.abicht.de
St. Pauli Landungsbrücken, Brücke 1+4



Scan me for the light tour calendar



XXL round trip along the picturesque banks of the Elbe towards Blankenese. Daily from April 1st to October 31st.

2-hour round trip on our modern saloon ships. Along the picturesque banks of the Elbe, past Blankenese and the Airbus factory. After a turnaround, we enter the container port and sail to the Köhlbrand Bridge.

Back past the beautiful skyline of Hamburg and the Elbphilharmonie concert hall to the starting point at Landungsbrücken, St. Pauli Piers.

Info & departure XXL round trip to Blankenese

Departure 01.03.–31.10. | daily 12.45 p.m.
Departure 01.11.–end of february | every saturday 12.45 p.m.
Duration ca. 2 hours
Additional departures on weekends and public holidays.

